

# How to sort plastic containers/packaging for recycling



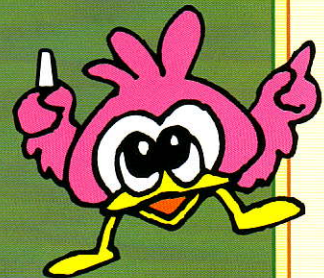
- Please divide plastic containers and packaging from combustible waste.
- Please observe these garbage disposal and recycling rules.

**Q :** What are plastic containers and packaging materials?

**A :** ○ They are plastic for wrapping or packaging things.

○ Marked  on them.

○ Stationery, toys, plastic basins and buckets themselves are not plastic containers.





See the back cover for collection days and districts.

# Items you can dispose

## Plastic bags and film

- Plastic bags for snack or frozen food
- Plastic bags from stores
- Plastic film for a tissue box or tobacco
- Plastic net bags for vegetables, etc.



Plastics with this mark!



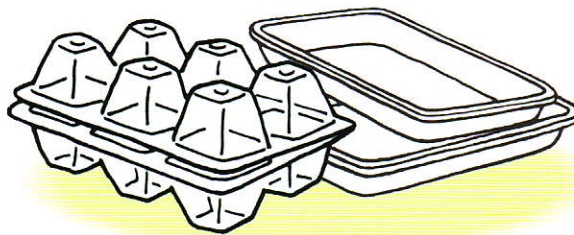
## Cups and Bottles

- Plastic containers for noodles
- Plastic containers for pudding or jelly
- Plastic bottles for oil, sauce, dressing
- Plastic bottles for detergent, shampoo, deodorizer or fragrance
- Plastic bottles for lactic drink yoghurt, etc.



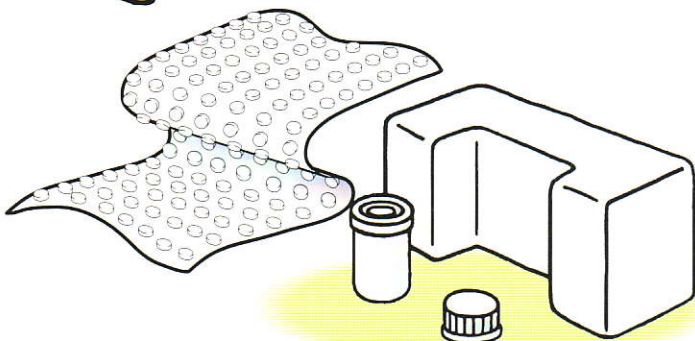
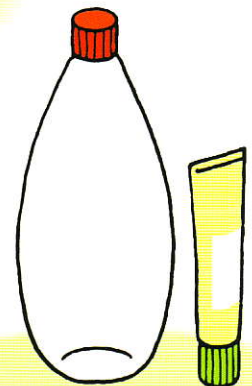
## Trays, Packages for

- Eggs
- Foods
- Margarine
- Lunch boxes
- Tofu, natto, miso, etc.
- TV dinners, etc.



## Tubes for

- Mayonnaise, ketchup, paste wasabi, etc.
- Tooth paste, cosmetics, etc.



## Lids, Film cases.

- Lids of PET bottles and wrapping film
- Air cap (packing), styrene foam, film of capsule/tablets
- Photo film cases, etc.

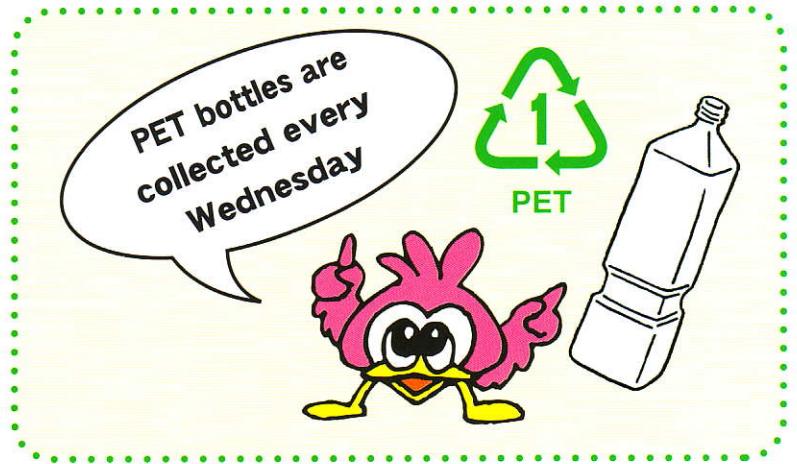
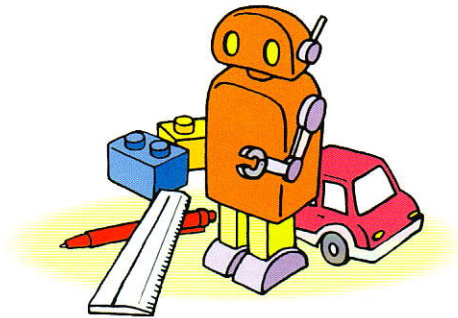


# Non-Recyclable Plastics

※ Take out as combustible waste.

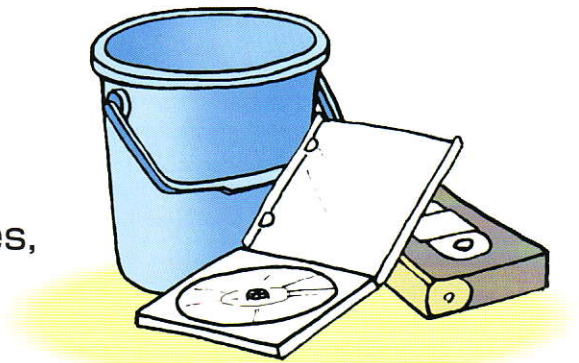
## ■ Toys, Stationery, etc.

Toys, Plastic toy-model, swimming floats, Leisure sheets, Rulers, Mechanical pencils, Markers, etc.



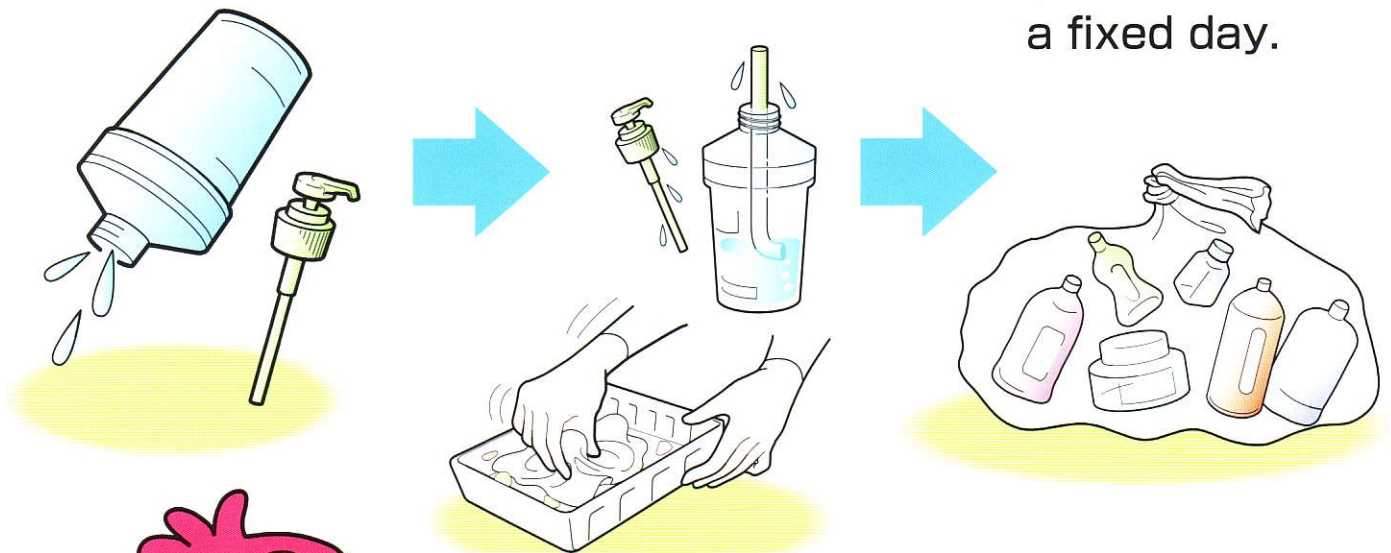
## ■ Goods/manufactured goods

Combs, Brushes, Bath chairs, Basins, Plastic tanks, Plastic dress cases, Cutting board, Bucket, Straws, Tablewares, Cassette tapes, Video tapes, CD, etc.



## Instructions

- 1** Please remove the caps. Should be emptied.
- 2** Wipe out or rinse the inside.
- 3** Placed in transparent or semi-transparent bags and take out on a fixed day.



※ You don't have to remove price stickers if it is hard to peel it off.



# Collection Days by District

## Area Served by the Nagoe Waste Treatment Center

District	Mon	Tues	Wed	Thurs	Fri
Juniso, Jomyoji, Nikaidoh Nishi Mikado, Yukinoshita Ogigayatsu, Komachi Omachi, Zaimokuza Onarimachi, Sasuke	Combustible Waste	Paper & Fabrics※ (Non-Combustible Waste Toxic/Hazardous Waste (once a month) ▲)	PET Bottles Yard Trimmings	Combustible Waste	Cans & Bottles  Plastic Packaging
Yuigahama, Sasamemachi Hase, Sakanoshita Gokurakuji, Inamuragasaki Shichirigahama-higashi	Combustible Waste	Cans & Bottles  Plastic Packaging	PET bottles Yard Trimmings	Combustible Waste	Paper & Fabrics※ (Non-Combustible Waste Toxic/Hazardous Waste (once a month) ▲)
Koshigoe, Tsu Tsu-nishi Shichirigahama	Yard Trimmings  Plastic Packaging	Combustible Waste	Cans & bottles PET bottles	Paper & Fabrics※ (Non-Combustible Waste Toxic/Hazardous Waste (once a month) ▲)	Combustible Waste
Nishi-kamakura, Kajiwara Terabun, Yamasaki (Uguisuyama) Kamimachiya, Tebiro, Fueda Tokiuwa, Kamakurayama	Paper & Fabrics※ Yard Trimmings	Combustible Waste	Paper & Fabrics※ (Non-Combustible Waste Toxic/Hazardous Waste (once a month) ▲)	Cans & Bottles  Plastic Packaging	Combustible Waste

## Area Served by the Imaizumi Waste Treatment Center

District	Mon	Tues	Wed	Thurs	Fri
Yamanouchi Dai (excluding 1-through 5-chome) Kobukuroya	Combustible Waste	Yard Trimmings  Plastic Packaging	Paper & Fabrics※ PET Bottles	Combustible Waste	Cans & bottles (Non-Combustible Waste Toxic/Hazardous Waste (once a month) ▲)
Yamasaki (excluding Uguisuyama) Dai 1- through 5-chome	Paper & Fabrics※  Plastic Packaging	Combustible Waste	Cans & Bottles PET bottles	Yard trimmings (Non-Combustible Waste Toxic/Hazardous Waste (once a month) ▲)	Combustible Waste
Ofuna, Takano, Iwase Imaizumi, Imaizumi-dai	Combustible Waste	Cans & bottles (Non-Combustible Waste Toxic/Hazardous Waste (once a month) ▲)	PET bottles Yard Trimmings	Combustible Waste	Paper & Fabrics※  Plastic Packaging
Okamoto, Tamanawa Ueki, Shiromeguri Sekiya	Cans & Bottles Yard Trimmings	Combustible Waste	Paper & Fabrics※ PET Bottles	Plastic Packaging (Non-Combustible Waste Toxic/Hazardous Waste (once a month) ▲)	Combustible Waste

※ "Paper & Fabrics" refers to paper cartons, mixed paper, newspapers, magazines, used books, paperboard, cardboard, clothing and rags.

▲ Please refer to the table below for collection days by district of non-combustible waste and toxic/hazardous waste.

## Collection Days by District of Non-Combustible Waste and Toxic/Hazardous Waste (once a month)

	Tues	Wed	Thurs	Fri
First	Juniso, Jomyoji, Nikaidoh	Nishi-Kamakura, Kamakurayama	Okamoto	Yamanouchi
Second	Nishi Mikado, Yukinoshita, Ogigayatsu, Komachi, Onarimachi, Sasuke Ofuna 6-chome, Iwase	Kajiwara (unmarked district) Terabun (unmarked district) Kamimachiya, Tebiro	Koshigoe (excluding unmarked district) Tsu-nishi Ueki	Yuigahama, Sasamemachi, Hase Dai (unmarked district) Kobukuroya
Third	Omachi, Zaimokuza Ofuna 1 - through 5-chome Ofuna (unmarked district)	Fueba Tokiuwa	Koshigoe (excluding unmarked district) Tsu, Shichirigahama Tamanawa, Shiromeguri, Sekiya	Sakanoshita, Gokurakuji Inamuragasaki, Shichirigahama-higashi
Fourth	Takano, Imaizumi Imaizumi-dai	Kajiwara (excluding unmarked district) Terabun (excluding unmarked district) Yamasaki (Uguisuyama)	Yamazaki (exluding Uguisuyama) Dai (excluding unmarked district)	

Web: <http://www.city.kamakura.kanagawa.jp/> <e-mail> shigen@city.kamakura.kanagawa.jp

Contact: Resource Solution Unit, Resource Renewal Department TEL 23-3000 (ext.2344,2345) FAX 23-8700 August 2005