



Welcome!

Kamakura is aiming to create a city where "people respect and recognize diversity, and live comfortably as they are."
This guidebook has been made for non-Japanese speaking residents and those who are studying Japanese.

Ordinance aiming a community coexistent society



This guidebook contains two dimensional codes not official to the Kamakura City. Please be advised that information may be subject to change and may require confirmation. You can get support from "Multilingual Support Center Kanagawa" for assistance. (P14)

Register to automatically receive free information



Official LINE of Kamakura
Receive information and news from the city hall.



Disaster prevention/safety information email
See P12 for details



History, Culture and Events

There are many festivals called "matsuri".
You can go to any matsuris at temples/shrines regardless of religion.

Kamakura Tourist Information



Kamakura Tourist Information (festivals/matsuri)



"Kamakura" (Japan Guide)



ENG



Nature

Beach

Jellyfish



Bluebottle



DO NOT TOUCH. They are dangerous.

Mountains

There are many nature tracks to enjoy.



"Hiking in Kamakura"

ENG CHN KOR



Schedule and prepare before you walk. Slopes and tracks may be slippery.



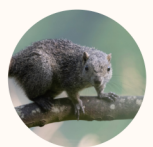
There are only few rest areas/bathrooms. (They may be old. Bring tissues.)

Watch out for wild animals and insects!

Hawks



Squirrels



Masked palm civets



Snakes



Wasps



Centipedes*



"7 Bugs Lurking in Japanese countryside" (All About Japan)



ENG

*They will sting you and can be dangerous. See a doctor in case you get stung. → P5



Community - "Jichi-kai, Chonai-kai"

"Jichi-kai" (自治会) and "Chonai-kai" (町内会) are groups of neighborhood residents. They have various activities to improve the community. You will get to know your neighbors more and receive local information when you join.
There are also things to do as a member ("Tou-ban").



Members pay fee. Amount and timings differ by jichikai and chonai-kai.



If you don't know which jichikai you belong to, ask the city hall.
地域のつながり課 (Chiiki no tsunagari ka) 0467-23-3000

What the Jichi-kai/Chonai-kai do (depends on Jichi-kai/Chonai-kai)

Safety

- Neighborhood patrol.
- Prepare for natural disasters like earthquake and typhoon. → P14 Disaster prevention
- Take turns cleaning the clean station. → P3 Garbage

Notify Information

"Kairan-ban" (回覧板 circular bulletin board) :
Pass around the board to notify regional information.



Read. sign your name or stamp your hanko.

Pass to the next person (usually next door)



"Keiji-ban" (掲示板 information board):

Postings of regional events and other information.

Gatherings

"Jichi-kaikain" (自治会館) , "Chonai-kaikan" (町内会館) are community centers/halls.

"Kodomokai" (こども会) is local childrens' organization to host events.



Communication with neighbors is important. When you move in, it's customary to ring the bell and say hello to your neighbors and get to know them.
Good relationship with neighbors will help in times of disaster.



Language



Nihongo COSMOS(Kamakura)

ENG



NHK World Japan for learners

ENG (Different programs have different languages)



Kanagawa Japanese lessons map

ENG CHN KOR SPA POR VIET



"TSUNAHIRO" Connect and Enhance Your Life in Japanese (Agency for Cultural Affairs)

ENG CHN KOR SPA POR VIET TAG THAI NEP IND KHM MON MYA RUS FRA UKR

It's good to take lessons to learn Japanese and make new friends. When searching, use key words like [Kamakura lessons ○○ (your interest ex. cooking)]

You will get more results if you search in Japanese.